



NEW JERSEY



# PIPE LINE NEWS



SEPTEMBER 2025  
VOLUME 51 ISSUE 02

## 2025-2026 BOARD OF DIRECTORS

**President: Samantha Miccio**

**Email:** [president@newjerseyaspe.org](mailto:president@newjerseyaspe.org)

**Vice President Technical: Jeff Beeden, PE**

**Email:** [technical@newjerseyaspe.org](mailto:technical@newjerseyaspe.org)

**Education Chair: Nick Azmo**

**Email:** [education@newjerseyaspe.org](mailto:education@newjerseyaspe.org)

**Vice President Legislative: Dan O'Gorman, CPD**

**Email:** [legislative@newjerseyaspe.org](mailto:legislative@newjerseyaspe.org)

**Vice President Membership: Frank Smith**

**Email:** [membership@newjerseyaspe.org](mailto:membership@newjerseyaspe.org)

**Treasurer: Rob Curcio**

**Email:** [treasurer@newjerseyaspe.org](mailto:treasurer@newjerseyaspe.org)

**Administrative Secretary: John Kelley**

**Email:** [administrative\\_secretary@newjerseyaspe.org](mailto:administrative_secretary@newjerseyaspe.org)

**Corresponding Secretary/News Editor: Jordan Westra**

**Email:** [correspondingsecretary@newjerseyaspe.org](mailto:correspondingsecretary@newjerseyaspe.org)

**ASPE Young Professional Liaison: Christian Tennant**

**Email:** [ayp@newjerseyaspe.org](mailto:ayp@newjerseyaspe.org)

**Women of ASPE Liaison: Amber Peluso**

**Email:** [woa@newjerseyaspe.org](mailto:woa@newjerseyaspe.org)



NEXT MEETING:  
2025-26 MEETING 01:  
SIPHONIC DRAINS  
WEDNESDAY  
SEPTEMBER 17TH



CHECK OUT OUR WEBSITE  
[NEWJERSEYASPE.ORG](http://NEWJERSEYASPE.ORG)

FOLLOW US ON INSTAGRAM  
[@NJ.ASPE](https://www.instagram.com/NJ.ASPE)

This is a New Jersey Chapter of the American Society of Plumbing Engineers publication. The Society or Chapter assumes no responsibility for any advertisements or statements by any officer or member that may be construed as an approval or disapproval, or official position of the Society, of the material contained herein. Local Chapters are not authorized to speak for the Society

**NEW MEETING VENUE!**



*You are invited to attend*

**REGISTER NOW**



# **ASPE NEW JERSEY CHAPTER'S**

## **September Technical Dinner Meeting**

Wednesday, September 17th, 2025

Cocktail Hour: 5:00pm–6:00pm

Technical Presentation: 6:00pm–7:30pm

Topic: **Siphonic Drainage**

Speaker: **James F. Ellis | National Sales Manager | Hydromax**

Member Price: \$40 ● Il Castellos

Non Member Price: \$50 ● 81 Main Street,

\*Early Bird Discount of \$10 before 9/10\*

● Woodbridge, NJ 07095

This meeting qualifies for 1-hour CEU

Attendees are required to notify chapter if a CEU Certificate is required during the meeting



# Our Tradition of Excellence Continues

YESTERDAY, TODAY—AND ALWAYS



**Generations of loyal customers  
rely on the Holby Tempering Valve  
for their Master Mixing Valve.**

- ▼ Easy to install
- ▼ Easy to service
- ▼ Only 3 internal parts
- ▼ Dependable

Our latest product, the HolbyMonitor,  
continues this tradition of trust and value.

- ▼ Monitors domestic hot water temperature 24/7
- ▼ Sends instant alerts
- ▼ Becomes Cloud-based with Mobile App
- ▼ Increases customer satisfaction



**973.465.7400**  
**sales@holby.com**  
**holby.com**



# From the President's Desk

Hello everyone,

As autumn approaches, I'm delighted to highlight three upcoming events that promise technical exploration, creative connection, and plenty of pipe-rific fun:

**Wednesday, September 17** — Siphonic Drainage Presentation, Woodbridge, NJ  
An evening dive into the mechanics and design of siphonic drainage systems.

**Wednesday, October 15** — Tour of the Chubb Risk Engineering Center, Branchburg, NJ  
This exclusive tour offers real-world insights into risk engineering and advanced plumbing design. Space is limited; make sure you register early to secure your spot.

**Thursday, October 23** — Women of ASPE Sip & Paint Night  
Our kickoff event for our Women of ASPE group. Join us for a fun and relaxing evening of art, laughter, and connection. All painting supplies and beverages will be provided; bring your creativity and your favorite spirit of fellowship.

We still have sponsorship opportunities open for 2025-2026! Without our sponsors, NJ ASPE would not exist.

Thank you for helping make this year both enriching and unforgettable. I can't wait to see you at all the exciting events & meetings we have planned out for you!

*Samantha Miccio*

New Jersey ASPE President  
[president@newjerseyaspe.org](mailto:president@newjerseyaspe.org)

## Happy Birthday

### September

**Anthony J. Curiale FASPE**

**Bill Tennant**

**James Farrell**

**James Cika EIT**

**Alejandro Rodriguez Piti CPDT**

**Jeff Beeden P.E.**

**Jordan Westra**

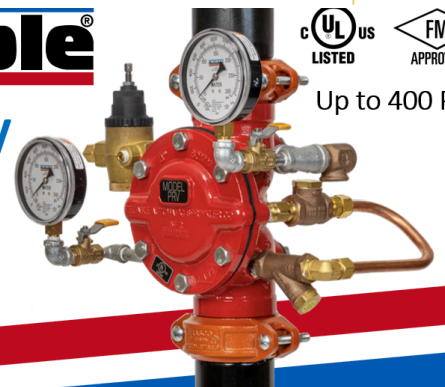
**Jacob Shively**

**Jesson Lim**

**Patrick Pinho**

### Reliable®

**Model PRV**  
*Pressure  
Regulating  
Valve*



cUL US LISTED FM APPROVED  
Up to 400 PSI

## DAN O'GORMAN, LLC

10 Albany Street, Edison NJ 08837

Phone: 732-661-1935 (Cell) 732-841-5799

Email: [danogorman@verizon.net](mailto:danogorman@verizon.net)

Website: [Danogorman.net](http://Danogorman.net)





## Great Ideas are **DRIVEN by ENGINEERING**

When engineered systems are driving the cost of construction,  
**Engineering Driven Design PC**  
provides an honest approach and optimal solutions.

### **SPECIALTIES**

Laboratory & Research Centers  
Data Centers  
Clean Rooms  
Vehicle Service Centers  
Flavor & Fragrance Facilities  
Senior Living & Memory Care Facilities  
Building Automation Systems  
Energy Upgrades

### **SERVICES**

Heating, Ventilation & Air Conditioning Design  
Electrical Power & Lighting Design  
Plumbing Systems Design  
Fire Protection & Alarm Design  
IT Structured Wiring Design  
Security System Design  
Energy Audits  
Construction Document Quality Reviews

### **ENGINEERING DRIVEN DESIGN PC**

555 Route 1 South • Suite 100 • Iselin, NJ 08830  
Tel: 848-247-6150  
[www.engineerdriven.com](http://www.engineerdriven.com)

# Membership Updates



**Thanks to each of you for being part of this journey.  
Let's keep the momentum rolling!**

**Renewals:** Thank you to everyone who has renewed their membership recently! Your continued involvement keeps our chapter strong and vibrant.

**Multi Chapter Affiliation:** Did you know that for only \$80 more per chapter you can join as many chapters as you would like? The New Jersey Chapter proudly has 29 multi-chapter members!

**Upcoming Member Events:** Don't forget to mark your calendars for our upcoming meetings & events. These are great ways to connect, learn, and grow together.

## New Membership

Please join us in welcoming our newest members! We're thrilled to have the following professionals join our community

Nicole Murphy  
Aaron Valentin PE  
Uday Mahtani

We're thrilled to announce that our chapter has grown to **124** passionate members!

## Expiring Membership

Time to Renew

Jagish Gil  
Jonathan Mann  
Vincent Armenti  
Steven Langan  
Ryan Mullen  
Francis Pfeiffer  
Craig Wolsten  
Adam Caravaglia  
Michael Castens  
Angel Rodriguez

William Tennant  
Brian Boeckel  
Matthew DeVita  
Robert Hansen  
Sergio Hernandez  
Joseph Layden  
Jesson Lim  
Sean Mooney  
Patrick Pinho  
Ahmed Soliman



## A CALL TO ACTION FROM THE VP Membership



As your VP of Membership, I want to remind you that ASPE is more than a professional organization; it's your platform for growth, connection, and leadership in the plumbing engineering industry. Whether it's exclusive technical resources, unmatched networking opportunities, or career development through certification and education, your ASPE membership is your competitive edge. Let's keep building a stronger, more innovative community together.

**Know a colleague who could benefit? Invite them to join us today!**

**Vice President, Membership: Frank Smith**  
**Email: [membership@newjerseyaspe.com](mailto:membership@newjerseyaspe.com)**



# INDUSTRY LEADING COLD CLIMATE PERFORMANCE

149F OUTLET WATER  
-4F OPERATION



100% GUARANTEED  
SYSTEM PERFORMANCE

EST. 1924

Take advantage of our  
performance guarantee  
**ASK US!**

100 Years supporting engineers  
and contractors with energy efficient  
heating, cooling, and DHW solutions.

## ASK ABOUT OUR PERFORMANCE WARRANTY



DESIGN  
ASSIST



PRODUCT  
SIZING AND  
SELECTION



PRODUCT  
SOURCING



FIELD  
SUPPORT



EXTENDED  
WARRANTY

**Heat Pumps | Water Heaters | Pumps |  
Pressure Booster Packages | Gas Connectors**  
and everything in between



SCAN ME

Wallace Eannace | 201.891.9550 | wea-inc.com  
779 Susquehanna Avenue, Franklin Lakes, NJ 07417



Lochinvar



Bell & Gossett



CEMLINE  
CORPORATION



GOULDS  
WATER TECHNOLOGY  
a xylem brand



Metraflex  
for pipes in motion







## Section LLC



PLUMBING GROUP



### Field Fix

A common oversight in design reviews?  
Insufficient access space for cleanouts. It's easy to miss on paper but a real headache on site. Always double-check clearances in tight mechanical rooms—future maintenance teams will thank you.

## Did you hear that? The Hidden Rumble: Hydraulic Jump

No, it's not a new fitness craze. In plumbing and fluid mechanics, a hydraulic jump occurs when high-velocity water abruptly slows down, causing a sudden rise in water level. This often happens in storm drains or open channels and is an important factor in system design.

In plumbing systems, hydraulic jumps can sometimes manifest as banging or thudding sounds behind walls or ceilings. While this may be mistaken for water hammer, the cause is different: it's due to rapid changes in flow velocity and elevation in partially filled horizontal pipes. Proper slope, pipe sizing, venting, and strategic use of offsets can help mitigate these effects and keep systems quiet and efficient.

NEW JERSEY WOMEN OF ASPE

# Sip & Paint

AN EVENING OF ART, FUN, AND DRINKS

23<sup>TH</sup>  
OCT

6:30-  
9PM

**EVENT PERKS:**  
NETWORKING  
DRINKS  
GUIDED SESSION  
GIVEAWAYS

HOSTED BY  
**Women  
of ASPE**

RSVP: BY OCT 2  
APELUSO@PLATSKY.COM



PINOT'S PALETTE 647G ROUTE 18 S EAST BRUNSWICK, NJ 08816

SPONSORS: ENGINEERING DRIVEN DESIGN, HOLBY, VICTAULIC, ACCARDI, & WALLACE ENNACE

JOIN WOA NYC FOR A CAUSE

## BREAST CANCER WALK IN CENTRAL PARK

SUNDAY,  
OCTOBER 19TH

TIME: 9AM - NOON

LOCATION MEET UP:  
BEETHOVEN MONUMENT  
(IN CENTRAL PARK, GOOGLE MAP IT)

RSVP:  
REGION1WOA@GMAIL.COM  
RECEIVE A FREE  
T-SHIRT\* WHEN YOU RSVP!  
INCLUDE YOUR SIZE IN  
EMAIL

\*WHILE SUPPLIES LAST

THIS EVENT IS OPEN TO EVERYONE

## How you can get involved

Want to become more active and take advantage of the benefits of being apart of a professional society?

- **Attend Technical Meetings** – Join us monthly for our technical meetings to earn CEUs, stay up to date on industry trends, and connect with peers across all segments of plumbing design from code officials to manufacturers.
- **Volunteer for the golf outing** – Our annual golf outing needs volunteers to help with planning, sponsor coordination and day of operations! Please contact [president@newjerseyaspe.org](mailto:president@newjerseyaspe.org) if you are interested in volunteering some of your time!
- **Collaborate across societies** – Members active in other professional groups are invited to co-organize joint meetings and events. These collaborative events help us broaden our reach and share our knowledge more widely.
- **Bring a friend** – We encourage you to bring a friend, colleague, peer or aspiring plumbing engineer, to any event. Whether they're first time attendees or prospective members, sharing the ASPE experience is how our community grows.

## DOLPHIN EQUIPMENT CORPORATION

Serving all your hydronic plumbing needs and solutions in the NJ and NY area for nearly 30 years.

Domestic Water Boosters, Tank Fill, Domestic Hot Water Heating & Custom Plbg. Systems, Mixing Valve Stations, Domestic Hot Water Heat Exchangers, Hydropneumatic Tanks, Sump/Sewage Systems, Elevator Oil Sensing Pumps, Direct Inline Sump/Sewage Systems, Valves and Hoses, Water Heater & Hydronic Boiler Modular Systems, Fire Pump Systems







# The Knowledge Exchange

## Article #3 ASSE Standard -1003



Check back each month as our Education Chair, Nick Azmo dives into one of the 49 ASSE Standards. Find the previous articles located in our previous newsletters.

### **An Introduction into the ASSE Standards:**

The purposes for the American Society of Sanitary Engineering (ASSE) standards is to protect public health and safety by establishing minimum performance and professional qualification requirements for plumbing products and professionals.

Last month we reviewed ASSE Standard 1002, this month we will take a look at Water Pressure Reducing Valves for Domestic Water Distribution Systems.

### **ASSE 1003 - Water Pressure Reducing Valves for Domestic Water Distribution Systems**

In our third series, were going to talk about Direct Acting Pressure Reducing Valves or as we like to call them out in the field PRVs. It is important to understand that there are two types of pressure reducing valves, direct acting where as soon as you run some water, we lose pressure because of flow demand and pilot driven PRVs or better known as Automatic Control Valves (ACV) where these PRVs only lose 3-4 PSI. Standard 1003 directly deals with only Direct Acting PRVs.

All three model plumbing codes (IPC, UPC, NSPC) require buildings not to exceed 80 PSI in a static condition. High or excessive water pressure can lead to damaged pipes, fixtures and even water heaters by keeping the water pressure at a safe level. This extends the lifespan of the equipment, decreases water consumption by eliminating water waste and lowers energy consumption by decreasing the amount of hot water no longer

The main purpose of any PRV is to take high often fluctuating pressures and bring it down to a more manageable and consistent lower pressure for use in the buildings internal plumbing system. Without proper water regulation, excessive water pressure can lead to burst pipes, fixture damage, and shorten equipment life. What is often overlooked however is that pressure fluctuations also generate shock waves throughout the piping network. These repeated surges place stress on joints, fittings and solder connections which over time could crack, weaken or eventually fail.  
(continued on next page)



CONSULTING ENGINEERS, LLC

PH: 732.938.2666  
FX: 732.938.2521  
W: [www.ksi-pe.com](http://www.ksi-pe.com)

### ***The firm offers a full range of* Consulting Engineering Services**

- Mechanical, Electrical, Plumbing & Fire Protection Design
- Condition Assessment Reports
- Historical Preservation
- Renovations, Additions & Restoration of Existing Structures
- Structural Services
- Peer Review
- Feasibility Studies
- Value Engineering

149 Yellowbrook Road, Farmingdale, New Jersey 07727



# The Knowledge Exchange

## Article #3 ASSE Standard -1003

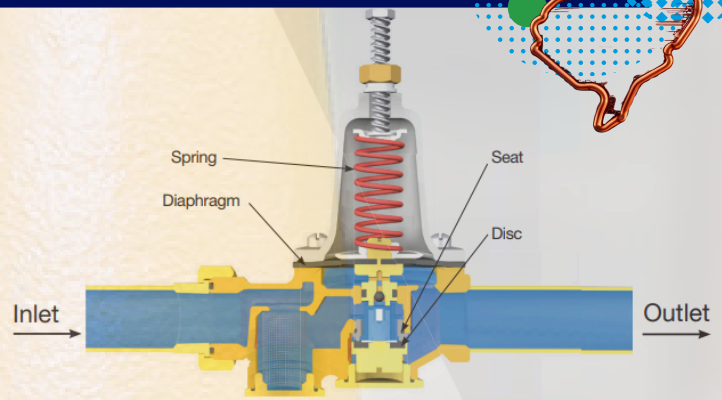


(continued from previous page) In addition, PRVs also improve system efficiency and water conservation. By maintaining a controlled water pressure downstream of the PRV, it helps prevent unnecessary water consumption while at the same time reducing stress on the water components in a building or system.

### Technical Breakdown and Functionality

The key technical components and their functions

- **Adjusting Spring:** This spring applies a downward force on the diaphragm, which in turn acts on the valve seat. Adjusting the compression of this spring with a screw on the top of the valve allows for the setting of the desired downstream pressure.
- **Diaphragm:** The diaphragm separates the high-pressure inlet side from the reduced-pressure outlet side. It senses the downstream pressure and, in conjunction with the adjusting spring, controls the position of the valve seat.
- **Valve Seat/Disc:** This component moves up and down to restrict or allow flow, thereby modulating the pressure. When downstream pressure rises above the set point, it pushes up on the diaphragm, overcoming the spring's force and moving the valve disc toward the seat to reduce flow. Conversely, a drop in downstream pressure allows the spring to push the diaphragm down, opening the valve and increasing flow.



Picture Credit: Watts

- **Bypass Relief Valve (Optional):** Some PRVs include an integral bypass relief valve. This allows for the thermal expansion of water in the plumbing system. As water heats up, it expands, increasing the pressure. The bypass relief valve allows this excess pressure to be slowly released back to the high-pressure side of the valve, preventing the system from exceeding safe pressure limits.

In next month's article, we will go over ASSE Standard 1004, Backflow Prevention Requirements for Commercial Dishwashing Machines.

Respectfully,  
Nick Azmo



**An IAPMO membership  
is a small investment  
that delivers big returns.**

Tap into cutting-edge codes, real-time updates and must-have education that help you lead, innovate and make a difference in your career and community.

Join online at: [iapmomembership.org](http://iapmomembership.org)







# Legislative News



## Vice President, Legislative: Dan O’Gorman

On August 22, 2024, New Jersey enacted the “Design Professional Self-Certification Act” (P.L. 2024, c. 58), authorizing architects and engineers— termed Qualified Design Professionals (QDPs)—to self-certify certain renovation, repair, alteration, and reconstruction projects under the Uniform Construction Code (UCC) without plan review. Eligible work includes specified occupancy groups with size limits (e.g., Group B up to 9,000 sq ft, Group R-3 up to 4,800 sq ft). Exclusions apply to projects like new commercial kitchens, high-amp electrical installations, or structural modifications requiring special inspections. QDPs must hold three years of New Jersey licensure, a DCA inspection authorization, and carry minimum professional liability coverage.



**SCAN HERE**  
For more details about  
the new act

# Register NOW!



[aspe.org/2025-aspe-tech-symposium](https://aspe.org/2025-aspe-tech-symposium)

September 24–28  
Rosen Centre Hotel  
Orlando, Florida

 **ASPE**  
TechSymposium2025



# 2025-2026 NJ ASPE MEETING & EVENT SCHEDULE

**Life may drain you, but our chapter events will keep the flow going!**

Meeting Date	Topic	Event & Tabletop Sponsors	Time & Location
Wednesday September 17 <sup>th</sup> , 2025	<b>2025-26 Meeting 01:</b> Siphonic Drains	Mifab Inc.	<b>Il Castellos</b> <b>81 Main Street</b> <b>Woodbridge NJ, 07095</b> <b>5:00pm-7:00pm</b> 5:00pm-6:00pm Cocktail Hour 6:00pm-7:00pm Technical Session
Wednesday October 15 <sup>th</sup> , 2025	<b>2025-26 Meeting 02:</b> Chubb Risk Engineering Center w/ Engineers Club of NJ		Chubb Risk Engineering Center <b>35 Columbia Road</b> <b>Branchburg, NJ</b> 5:00pm-8:00pm
Thursday October 23 <sup>rd</sup> 2025	NJ WOA Presents: Paint & Sip	Delta Commercial, Victaulic, Engineering Driven Design, Holby Valve	Pinot's Pallet 647G Route 18 S East Brunswick, NJ 08816 6:30pm-9:00pm
Wednesday November 19 <sup>th</sup> , 2025	<b>2025-26 Meeting 03:</b> Battle of the Pexes	Uponor & Viega	
TBD	AYP EVENT	Peak Industries, Engineering Driven Design, Holby Valve, Victaulic	TBD



# 2025–2026 NJ ASPE MEETING & EVENT SCHEDULE

Meeting Date	Topic	Event & Tabletop Sponsors	Time & Location
TBD DECEMBER	Holiday Party		TBD
TBD JANUARY	<b>2025-26 Meeting 04:</b> ASRAE/ASPE/MCA JOINT MEETING	TBD	TBD
Wednesday February 18 <sup>th</sup> , 2026	<b>2025-26 Meeting 05:</b> TBD	TBD	
Wednesday March 18 <sup>th</sup> , 2026	<b>2025-26 Meeting 06:</b> TBD	TBD	
Wednesday April 15 <sup>th</sup> , 2026	<b>2025-26 Meeting 07:</b> TBD	TBD	TBD
Wednesday May 20 <sup>th</sup> , 2026	<b>2025-26 Meeting 08:</b> TBD	TBD	TBD
TBD	NJ ASPE ANNUAL GOLF OUTING		NJ National Golf Club
Wednesday June 17 <sup>th</sup> , 2026	2025-26 Meeting 09: TBD Awards Ceremony/New Board of Directors Announced	TBD	TBD

Event details will be filled in soon!



NJ/NY/PA

MANUFACTURERS' REPRESENTATIVE FOR  
COMMERCIAL PLUMBING PRODUCTS



## COMMERCIAL PLUMBING SOLUTIONS

- **A.O. Smith** - Gas Fired & Electric Water Heaters, DHW Heat Pumps
- **Diversified Heat Transfer (DHT)** - Indirect Water Heaters
- **Ebara** - Submersible Sump & Sewage Pump Systems, Elevator Sump Pumps
- **Griswold Controls** - DHW Recirculation Systems, NSF Automatic Flow Balancing Valves
- **Iorex** - Water Pipe Corrosion Protection
- **Keflex** - Expansion Compensators & Joints, Pump Connectors & Pipe Guides
- **QuantumFlo** - Water Pressure Boosters
- **Taco** - Leak Detection Controls, Recirculation pumps, & Flow Thru Thermal Expansion Tanks
- **TracPipe** - Stainless Steel Flexible Gas Piping
- **Uponor** - PEX-A Plumbing Pipe Systems
- **Water Control Corp.** - Legionella/Pathogen Control & High-purity Water Systems, Water Reclamation & Filtration Systems

**Please contact:**  
Glenn Krause  
gkrause@walesdarby.com  
(732) 907-1085  
[walesdarby.com](http://walesdarby.com)

**Wales Darby - New York**  
2910 Express Drive South  
Islandia, NY 11749 (631)  
585-6800  
infony@walesdarby.com

**Wales Darby - New Jersey**  
5B Powder Horn Drive  
Warren, NJ 07059  
(732) 560-1001  
infonj@walesdarby.com

**Wales Darby - Pennsylvania**  
1650 Market Street #3600  
Philadelphia, PA 19103  
(267) 370-5204  
infopa@walesdarby.com





NEW JERSEY

# PAST PRESIDENTS

**50 YEARS OF  
NJASPE**

**CHARTERED**

**OCTOBER 19<sup>TH</sup> 1974**

**1974–1975 Andy Ciffer Jr.**

**1975–1977, 1990–1991 Manny Dios, CIPE**

**1977–1979 Russ Lipari**

**1979–1981 Raymond Lynch, PE**

**1981–1982 Jack Barret, PE**

**1982–1984 Bruce Ganley**

**1984–1986 Richard Glidden**

**1986–1988 Hank Zdanowski, CIPE, CPD**

**1988–1990 Alex Nilo, CIPE**

**1991–1993 Tim Brandauer, CIPE**

**1993–1995 Dave Quinlan, CIPE, CPD**

**1995–1996 Mike Frankel, CIPE**

**1996–1998 George Donegan**

**1998–2000 Tony Curiale, CPD**

**2000–2002 Dan O’Gorman**

**2002–2004 Fred Holzapfel**

**2004–2006 Gus Feliciano**

**2006–2010, 2018–2020 Karl Yrjanaine, PE**

**2010–2012 Luis Rodriguez, CPD**

**2012–2015 David J. Scofield**

**2015–2017 Ryan P. Mullen, PE, CPD**

**2017–2018 David J. Scofield**

**2020–2021 Anthony Curiale, CPD, FASPE**

**2021–2022 Peter Rufo**

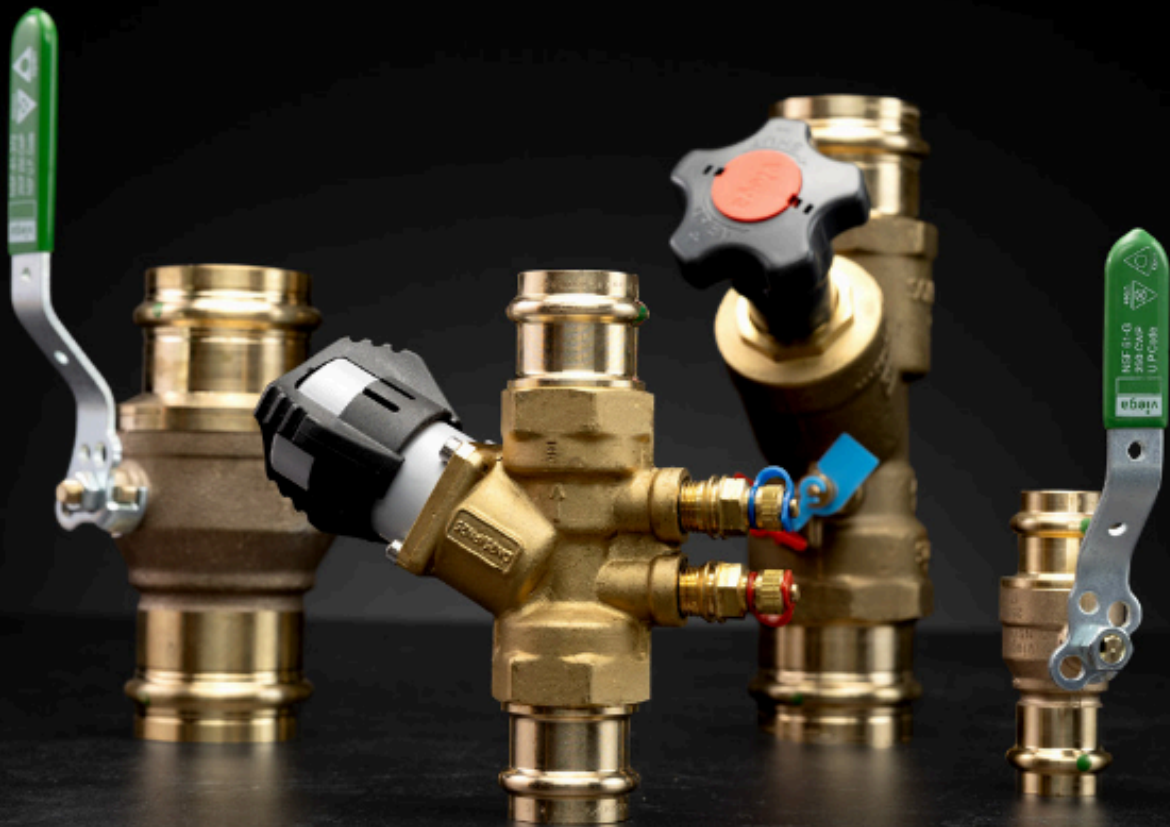
**2022–2025 Jeffrey Beeden, PE**



**Like a well-built system, strong leadership ensures the flow of knowledge, progress, and purpose through every generation. Past presidents laid the groundwork, we just continue with gratitude and pride.**

**viega**

VIEGA FITTINGS AND VALVES  
**ARE TESTED TO THE  
HIGHEST  
STANDARD**



**BOOK YOUR VISIT**  
TO THE NY VIEGA EXPERIENCE CENTER.



**SCAN TO SCHEDULE NOW!**

# 2025-2026 Sponsorship Levels

Benefit	The Golden Throne	The Main Supply	The Cleanout Crew	The Tank Supporter	The Flow Friend	The Pipe Pal
Price	\$2500	\$2000	\$1500	\$1000	\$500	\$250
Newsletter Size *Monthlies & Summer Issue*	Full Page (Premium Placement)	Full Page	Half Page	Quarter Page	Business Card Size	-
Logo in Emails/ Correspondance	Header Banner	Header Banner	Footer	Footer	-	-
Recognition in Newsletter - Sponsor Directory	Full Profile: Logo, Contact, Website, 75 word Bio	Logo, Contact, Website, 50 Word Bio	Logo, Contact, Website	Contact	Contact	Contact
Website Sponsor Page - Logo Hyperlinked to Website	X Top Spot	X	X	X	X	X
Website Homepage	X	X	X	X	X	-
Job Postings on Chapter Board on NJ ASPE Website & Linked in Page Newsletter Postings	Unlimited & 3/year in Newsletter	Unlimited & 2/year in Newsletter	Unlimited & 1/year in Newsletter	Unlimited	Unlimited	-
Social Media Mentions	4/year	3/year	2/year	1/year	-	-
Linecard/Product Line Placement on Website	X	X	X	-	-	-
Featured Newsletter Article	1/year	1/year	-	-	-	-
Email Blast-Dedicated Promotional Email Blast	2/year	1/year	-	-	-	-
2 Event Tickets each Technical Meeting (\$720 Value)	X	X	-	-	-	-
Special Event Sponsorship - WOA/AYP	X	-	-	-	-	-

## Additional Sponsorship Opportunities

Single Issue Full Page Ad Insert	\$200
Table Top Sponsor - Dinner Meeting Tabletop	\$200
WOA/AYP Special Event Sponsorship	\$500
Featured Newsletter Article - Half Page	\$100
Featured Newsletter Article - Full Page	\$200
Job Posting - Newsletter	\$50 Free to Engineering Firms with at least one NJASPE Member
Job Posting - ASPE Website/Linked in	\$50 Free to Engineering Firms with at least one NJASPE Member



**Scan here for more details or to pay with credit card!**

PLEASE E-MAIL [PRESIDENT@NEWJERSEYASPE.ORG](mailto:PRESIDENT@NEWJERSEYASPE.ORG) FOR THE 2025 – 2026 SPONSORSHIP OPPORTUNITY.



**Thank you to all of our 2025-2026 Chapter Sponsors**

## THE GOLDEN THRONE



**Lawrence Lowy  
Associates**

**Jerry Gonzales**  
**201-779-5405**

jgonzales@lawrencelowy.com  
[accardicompanies.us](http://accardicompanies.us)



**Holby Valve Inc.**

**973-465-7400**

info@holby.com  
[www.holby.com](http://www.holby.com)



**ENGINEERING DRIVEN DESIGN PC**

**Engineering  
Driven Design**

**+1 888 422 7830**

info@engineerdriven.com  
[engineeringdriven.com](http://engineeringdriven.com)



**Edwards Platt  
& Deely**

**555-555-5555**

youremail@company.com  
[www.yourcompany.com](http://www.yourcompany.com)



**Wallace  
Eannace**

**Wallace  
Eannace**

**201-891-9550**

youremail@company.com  
[www.wea-inc.com](http://www.wea-inc.com)

## THE MAIN SUPPLY



**Viega**

**Frank Smith**  
**732-903-6886**

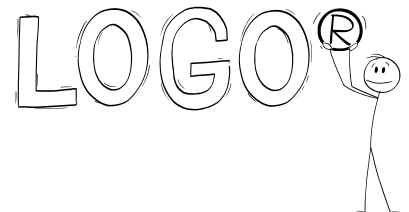
frank.smith@viega.us  
[www.viega.us](http://www.viega.us)



**Wales Darby**

**Glen Krause**  
**(732)-907-1085**

gkrause@walesdarby.com  
[www.walesdarby.com](http://www.walesdarby.com)



**Your Company  
Here**

**555-555-5555**

youremail@company.com  
[www.yourcompany.com](http://www.yourcompany.com)

## Thank you to all of our 2025-2026 Chapter Sponsors THE CLEANOUT CREW



### **Section 22 LLC**

**(732)-942-9444**

PO Box 97 Bradley Beach,  
NJ 07720

[Section22llc.com](http://Section22llc.com)



PLUMBING GROUP

### **Mcwane Plumbing Group**

**Hari Patel**

**(570)-899-9413**

[hari.patel@mcwanepbgrp.com](mailto:hari.patel@mcwanepbgrp.com)

[www.mcwane.com](http://www.mcwane.com)



## The Flow Friend

### **IAPMO**

**Chris Demarco**  
**(909)-234-5387**

ADDRESS

[chris.demarco@iapmo.org](mailto:chris.demarco@iapmo.org)

[iapmo.org](http://iapmo.org)

### **Reliable Sprinkler**

**215-262-4331**

1470 Smith Grove Rd, Liberty SC  
29657

[sschwander@reliablesprinkler.com](mailto:sschwander@reliablesprinkler.com)

[reliablesprinkler.com](http://reliablesprinkler.com)

## THE TANK SUPPORTER

### **Dolphin Equipment Corp.**

**Robert Hansen**  
**201-385-9999**

[dolphinequipment.com](http://dolphinequipment.com)

### **KSI Engineering**

**732-938-2666**

149 Yellowbrook Road,  
Farmingdale, NJ 07727

[www.ksi-pe.com](http://www.ksi-pe.com)

## The Pipe Pal

### **Dan O'Gorman**

**(732)-661-1935**

[danogorman@verizon.net](mailto:danogorman@verizon.net)

[danogorman.net](http://danogorman.net)



# Hey YOUNG PROFESSIONALS!

## Learn more about our group!

ASPE Young Professionals (AYP) is dedicated to the needs of plumbing engineers and designers 35 years old and younger. Your local ASPE Chapters have been busy organizing exciting opportunities designed to help you excel in your career, including:

- > Social and networking events
- > Partnerships with other associations
- > Educational offerings
- > Mentoring programs

And more!



Sponsored by:  
**PI** PEAK  
INDUSTRIES

**ASPE**  
**YOUNG**  
**PROFESSIONALS®**